

AVAILABLE INDUSTRIAL SITE - 4 ACRE SITE

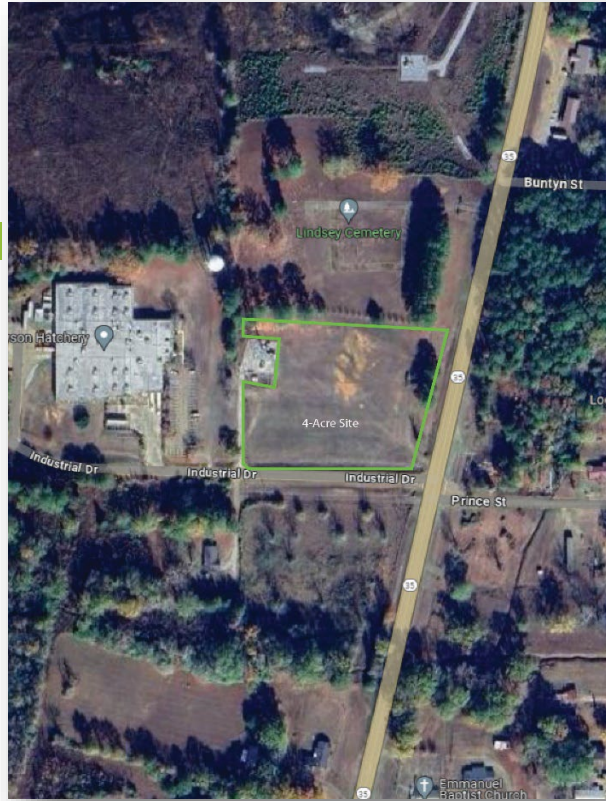
WALNUT GROVE INDUSTRIAL PARK
 2060 HIGHWAY 35 SOUTH
 WALNUT GROVE, MS 39189

LATITUDE: 32.602299
 LONGITUDE: -89.467224

This 4-acre site is owned by the Town of Walnut Grove and is available for either commercial or industrial development.

SITE DETAILS

MIN. AVAILABLE ACRES	1
MAX. AVAILABLE ACRES	4
CONTIGUOUS ACRES	4
AVAILABLE FOR DEVELOPMENT	
ZONED	INDUSTRIAL
FOR SALE	YES
FOR LEASE	YES
PROPERTY OWNER	TOWN
4-LANE HIGHWAY	13 MILES
MILES TO INTERSTATE	27 MILES



UTILITY	ON SITE	PROVIDER
ELECTRIC	YES	MISSISSIPPI POWER COMPANY
NATURAL GAS	YES	TOWN OF WALNUT GROVE
WATER	YES	TOWN OF WALNUT GROVE
SEWER	YES	TOWN OF WALNUT GROVE

AVAILABLE REPORTS	YEAR COMPLETE
PHASE I ENVIRONMENTAL	NO
CULTURAL REOURCES	NO
THREATENED AND ENDANGERED SPECIES	NO
WETLANDS DELINEATION	NO
LAND SURVEY	NO

CONTACT INFOMRATION

Pam Peoples, Executive Director (601) 267-7161
 Leake County Development Association pples.lcda@gmail.com